

p-Series

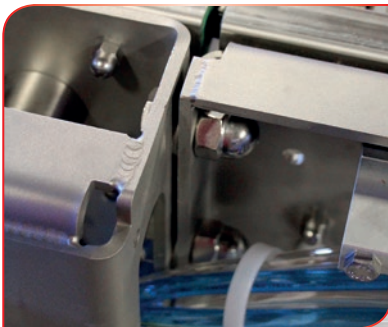
Thermoformer



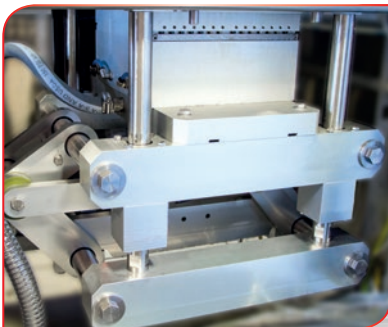
Presenting ... the Powerfull New Standard of Packaging Production



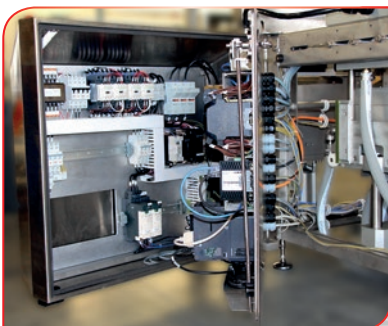
- Swing Arm HMI machine interface.
- **p-Software** designed to control with efficiency and ease.
- IP65 stainless steel display enclosure.
- Intelligent integrated diagnostics.
- Know Now! Machine/Production Metrics for both live setup and historic production data collection and reporting.



- The **p-Frame** design is elegantly simple, yet ruggedly durable. A true modular design.
- Frame segments are standardized for easy machine growth to future-proof your production investment.
- The VC999 **p-Series** is designed to work hard now and beyond regardless of product spec modifications or additions.



- The Forming and Sealing dies utilize a unique, simple and massively powerful design for the most consistent and even seal possible.
- Dies open and close with precision accuracy and deliver immense closing pressure.
- Top die lift options accommodate products up to 75 mm above the web line. Vacuum Skin Pack.



- Both **p-Cabinet** swing out and open for easy maintenance.
- Easy access to each dedicated **p-Cabinet**.
- Uniquely designed closures assure hygienic washdown. (IP69 standards).
- Reduced lifecycle costs with readily available, open source parts.

Pertinent

The **p-Series** thermoformer from VC999 is the next step in a long line of cutting edge industrial design and premium packaging systems. Running on a reliable PLC platform, **p-Software** is designed to navigate the HMI and control the machine with efficiency and ease.

Pacesetting

Mechanical direct-drive design, Servo-driven, advance system for high speed and accuracy. 2 kW Servo motor (9.55 Nm continuous torque / 28.6 Nm maximum torque). Communications to the Servo amp is over the field bus to make the system immune to vibration and noise. The motion profile is fully programmed through the HMI (distance, acceleration, deceleration).

Potent

The **p-Series** thermoformer features a smooth, satin hand finished stainless steel to exceed IP 69 requirements with a high RA (root average). The design also features minimized horizontal surfaces for easy, hygienic cleaning and sanitation.

Perceptive

Comprehensive zone-specific safety design utilizes PLC-controls, less connection points, less wiring, and is almost effortless to maintain. Ultra high speed, Gigabit Ethernet Field Bus CC link IE field enables secure communication at 10x faster speeds. Real time protocol enables control of remote I/O field devices with essentially no transmission delay.



Pure & Simple *p* stands for Performance

Proportions

The **p-Series** is designed to the highest standards of cleanliness. The **p-Frame** construction is a modular, flexible, and highly customizable concept to accommodate current and future production requirements. All independent form scissor-action **p-Lift** construction is rugged for work and price for perfection. Lubrication-free composite IGUS bearings. Cutting/Pinch-point guard design for employee safety & product perfection.

Perspective

Machine documentation (operation and maintenance manuals) are specifically written and configured to each machine, easily accessible online, on CD or in a printed booklet.



- IP69 standards.
- All connections are sterile or utilize stand-off connections for absolute cleanability.
- All cabinets are tightly sealed and panels are easily removed for cleaning.
- Stainless Steel, Everywhere.



- Safety First!
- Every Pinch-point and cutting surface is covered and system-monitored so employees are safe.
- Removal immediately triggers system shutdown and safety covers must be returned to restart the machine.

Features & Options Include

Flexible & Rigid, Vacuum, M.A.P., Vacuum Skin Packaging. High-Profile Packages, Shrink, Gas Flush, Plug Assist, Printed/Registered Films – Top & Bottom, Unlimited Cutting & Die Configurations.

Specifications

Standard machine widths	p285 • p320 • p355 • p420 • p459 • p520 • p560 • p620 • p720
Max. index length	Up to 650 mm (with preheating 500 mm max)
Loading lengths	500 mm min. – 1000 / 1500 / 2000 / 2500 ~ 5000 mm (no max)
Discharge lengths	750 mm min. – 1500 / 2250 / 3000 / 3750 mm (no max)
Draw depths	100 / 135 / 185 mm
Forming width of top web	288 • 323 • 358 • 423 • 462 • 523 • 563 • 623 • 723 mm
Tolerance	+/- 1 mm
Film roll diameter	400 mm (standard) / 800-1500 mm (Jumbo)
Roll core	76 mm / 3" (standard); Adapter for 152 mm / 6" available
Power supply	400 V • 3 PE • 50 Hz
Compressed air	min. 7 bar (850 l/min.)



Committed to Customer Satisfaction

- Your innovative packaging partner
- Industry experts
- Efficient, reliable machine designs & operating systems
- Professional on-or-off site training sessions
- First class global service organization

Our Ambition

- Long-term partnership
- Customer satisfaction
- Trust and respect
- Common success

CH: VC999 Verpackungssysteme AG, Melonenstrasse 2,
CH-9100 Herisau, Tel. +41 71 35 35 900, info@vc999.ch

DE: VC999 Verpackungssysteme GmbH, Industriestrasse 10,
D-78234 Engen, Tel. +49 7733 948 999, info@vc999.de

AT: VC999 Verpackungssysteme GmbH, Gewerbestrasse 1 / 2,
A-5164 Seeham, Tel. +43 6217/20812, info@vc999.at

BENELUX: VC999 Packaging Systems Benelux,
Senator Alfons Jeurissenlaan 1156, BE-3520 Zonhoven,
Tel. +32 477 49 65 22, info@vc999.be

www.vc999.ch

USA: VC999 Packaging Systems, 419 E. 11th Avenue, Kansas City,
MO 64116, Tel. +1 816 472 8999, sales@vc999.com

CAN: VC999 Canada Ltd., 153 Rue Sylvestre, Saint-Germain-de-Grantham,
QC, J0C 1K0, Tel. +1 819-395-4555, sales.canada@vc999.com

COL: VC999 Packaging Systems S.A.S., Parque empresarial Portos sabana 80,
bodega 78, Km 2,5 Autopista Medellin, Bogota, Colombia,
Tel. +57 (1) 8776061, sales.colombia@vc999.com

MEX: VC999 Mexico, Av del Federalismo 230 Fracc Industrial la Silla,
GPE NL, 67190, Monterrey México,
Tel./Fax. +52 81 836 13178, sales.mexico@vc999.com

www.vc999.com

A division of the

INAUEN GROUP